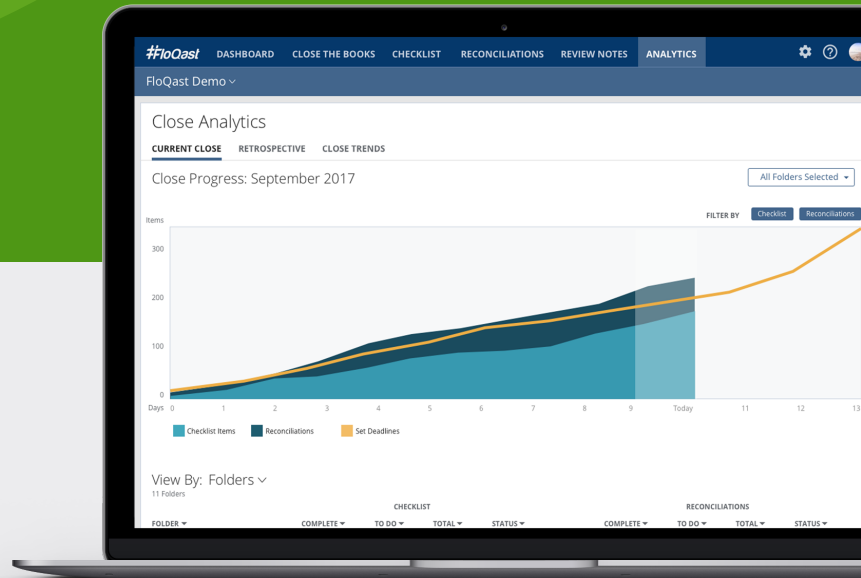


CLOSE ANALYTICS

At-a-glance visualizations for close efficiency

Controllers are constantly challenged with the devilishly complex question: are we on track to close on time or not? Close Analytics provides invaluable insight to optimize workload allocation and maximize an accounting team's most precious asset - time.

- ✓ Gain real-time insight about why your close is ahead or behind schedule
- ✓ Identify how close trends are progressing over time
- ✓ Pinpoint gaps or bottlenecks in workload allocation
- ✓ Instant access to data for detailed status reporting to management



Retrospective and Close Trends

Views of prior period closes and longer-term view of how this close process has evolved over time



All Entities View

Single-page summary view showing each entity's progress toward close completion, including which entities have successfully closed their books, are on track to get there, or are already late



Filtered Views

Filtered views to see only certain folders, or checklist items or reconciliations only, or some combination thereof; this is especially useful to isolate status of high-risk or otherwise key close items, or to visually display the root cause of any bottlenecks in the close process



NATALIE SANTIAGO
Accounting Manager,
Dollar Shave Club

“Close Analytics is helping us identify the bottlenecks holding up our month-end close, and has enabled us to improve the process in those specific areas.”

Close Analytics is bundled at no additional charge as part of the Corporate and Enterprise subscription plans.